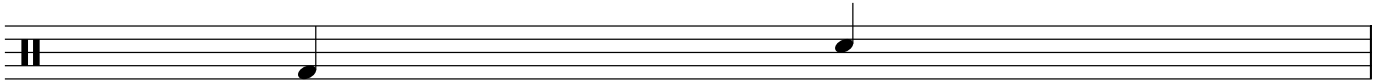


Introduction To Frame Drum

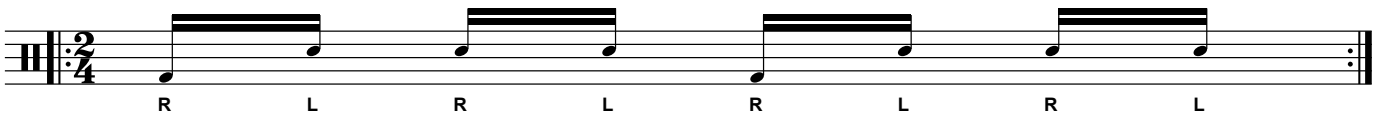
Pete Lockett

Open bass tone

High rim tone



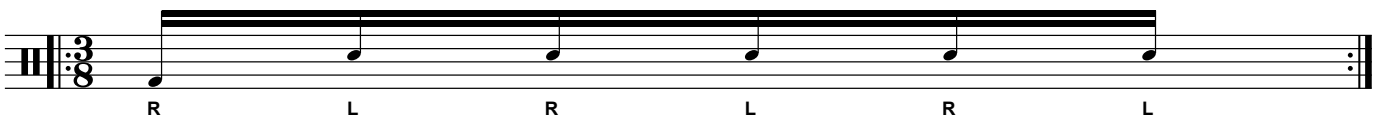
Exercise 1



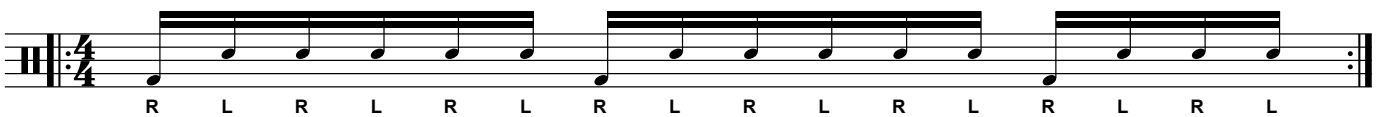
Exercise 2



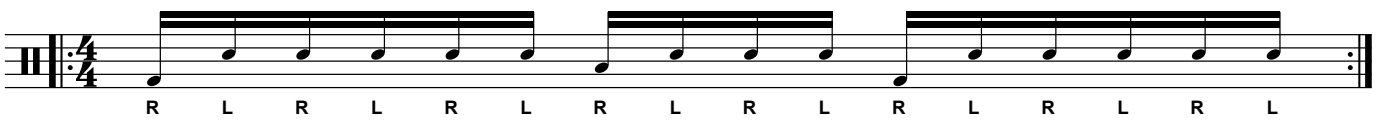
Exercise 3



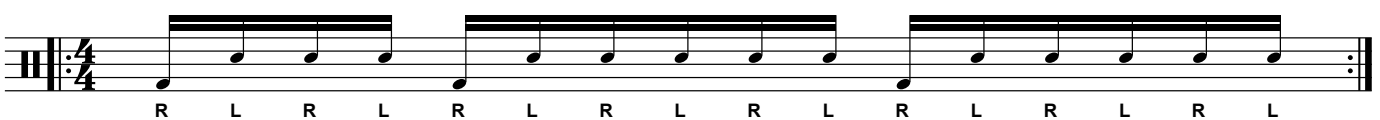
Exercise 4



Exercise 5



Exercise 6

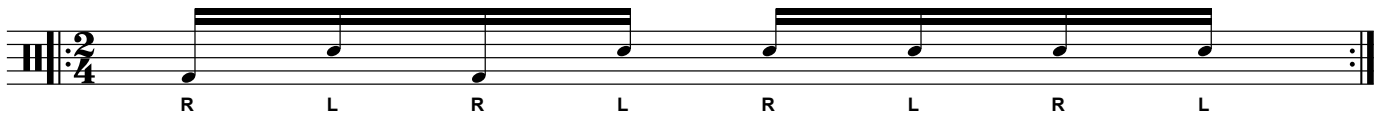


Exercise 7



Musical notation for Exercise 7, a drum exercise in 2/4 time. The notation consists of two measures of music on a single staff. The first measure contains four eighth notes with a double bar line above them, and the second measure contains four eighth notes with a double bar line above them. The notes are labeled R, L, R, L in the first measure and R, L, R, L in the second measure. The time signature is 2/4, and the key signature is one flat (Bb).

Exercise 8



Musical notation for Exercise 8, a drum exercise in 2/4 time. The notation consists of two measures of music on a single staff. The first measure contains four eighth notes with a double bar line above them, and the second measure contains four eighth notes with a double bar line above them. The notes are labeled R, L, R, L in the first measure and R, L, R, L in the second measure. The time signature is 2/4, and the key signature is one flat (Bb).