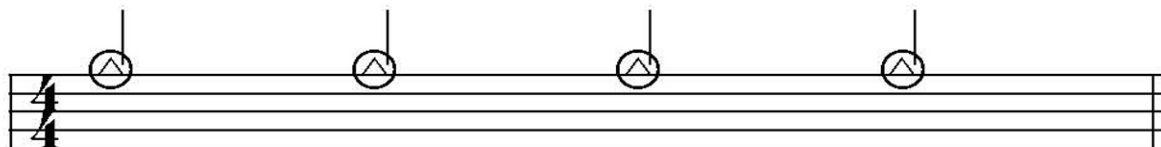


This time we are going to look at a simple but very effective way to lift a chorus. Two very simple patterns slot together to make this groove base.

The right hand plays straight quarters on the bell of the ride whilst the left hand plays the open hi hat on the 'and' of each beat as well as the back beat on the snare. We then add any appropriate bass drum pattern which suits the bass line and the song best. Examples one thru three look at a few straightforward possibilities.

Basis RH Ride Bell

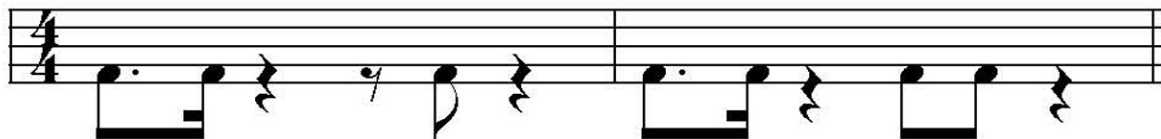


Basis LH Snare/Open HH and Hi-Hat



Ex 1

Bass Drum



Ex 2

Bass Drum



Ex 3

Bass Drum

